



End-to-End Marine and Coastal Data Management and Decision Support e-newsletter Autumn 2013

Welcome to our newsletter. We want to tell you what is happening in the company and what we are doing in the marine industry. We hope it is of interest ...



What is OceanWise?

We are an independent company specialising in all aspects of marine environmental data acquisition, data and knowledge management and GIS

New Office – New Recruits

We have moved into new larger offices in Alton, Hampshire in order to support the further expansion of our business. We have welcomed three new members into the team. Richard Farren joins us as a Systems Developer and will help us deliver a growing number of Maritime Information Infrastructure projects, Janet Chaplin as our Customer Services Manager and Rhod Powell as our Associate Marine Scientist responsible for Monitoring System design and installation.

EMODNet Hydrography Kicks Off in Portugal

The latest phase of the hydrography part of the European Marine Observation and Data Network ([EMODNet](#)) has commenced with a meeting in Lisbon, hosted by the Portuguese Marine and Atmospheric Institute ([IPMA](#)). As well as IPMA the project involves leading hydrographic offices and marine institutes, agencies and private companies across Europe. [OceanWise](#) is heading the UK effort, with the National Oceanographic Centre ([NOC](#)) acting as regional centre for North West Europe. The project is headed by Dutch company, [Maris](#).

EMODNet is fully funded by the European Commission through the Directorate-General for Maritime Affairs and Fisheries (DG MARE) and has the objective to migrate fragmented and inaccessible marine data into interoperable, continuous and publicly available data streams for complete maritime basins. There are seven themes in this latest phase of work. The hydrography theme takes hydrographic survey data from EU member states and makes it discoverable consistently through a central portal. The hydrography part is also developing a medium resolution digital elevation model (DEM) of European Seas using single beam and high resolution multi beam survey data.

Survey metadata, data and the DEM are all publicly accessible through discovery, view and download services from an easy to use portal which is fully compliant with the EU's [INSPIRE](#) Directive. The DEM will support the emerging [European Atlas of the Seas](#) and other data sharing initiatives and aims to provide the European input into [GEBCO](#), which is part of the scope of the current project. EMODNet does not replace national initiatives but complements them and provides a common platform for future development across the EU.

OceanWise is involved on many levels, including creating INSPIRE compliant metadata, handling requests for survey data and contributing our expertise to improving DEM creation. We are working closely with NOC, [IFREMER](#) and the French Hydrographic Office ([SHOM](#)). The EMODNet DEM complements OceanWise's Marine Themes DEM which provides a high resolution dataset and includes chart derived data where there are gaps in the coverage of survey data.



New Distributors and Value Added Resellers announced

To serve customers in our growing Worldwide markets, OceanWise recently signed up four new distributors – Geomod in France; Digimap in the Channel Islands; Integrated Facilities Management (IFM) in Australia and 7C's in Germany. We welcome the specialist expertise these companies bring to the wider maritime and GI related market where they are already providing excellent distributor and value-added services to our customers

- www.ifm.com/au
- www.digimap.gg
- www.sevencs.com
- www.geomod.fr

Improvements to Marine Themes Vector data

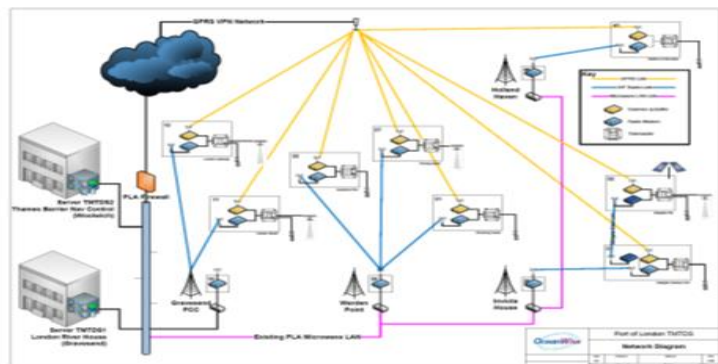
Over the last 6 months, we have addressed the challenge of combining the fragmented features present in nautical charting and existing chart derived products. Customers that have migrated to our innovative **Marine Themes** dataset will now see even bigger benefits, as the irregular coverage and multi scale levels of traditional charting have been overcome. Users should not be fooled by a recent trend by other providers of old products using outmoded techniques being given new names. We have invested time and expertise to create a far superior dataset. In comparative tests, users have been impressed by the simplicity and cleanliness of **Marine Themes**, compared with complexity, fragmented geometry and missing features that result from blanket 'cookie cutting' multiple charts. Marine Themes remains the most advanced marine dataset available for use in Desktop and Web GIS

Providing the new Tidal Monitoring, Telemetry and Display System for the Port of London Authority

OceanWise, in collaboration with Valeport and Wood & Douglas, has been awarded a prestigious contract to deliver a Tidal Monitoring, Telemetry and Display System (TMTDS) to the Port of London Authority (PLA). The TMTDS includes eight tidal monitoring stations in the Thames Estuary, plus a data feed from stations further upriver operated by the Environment Agency.

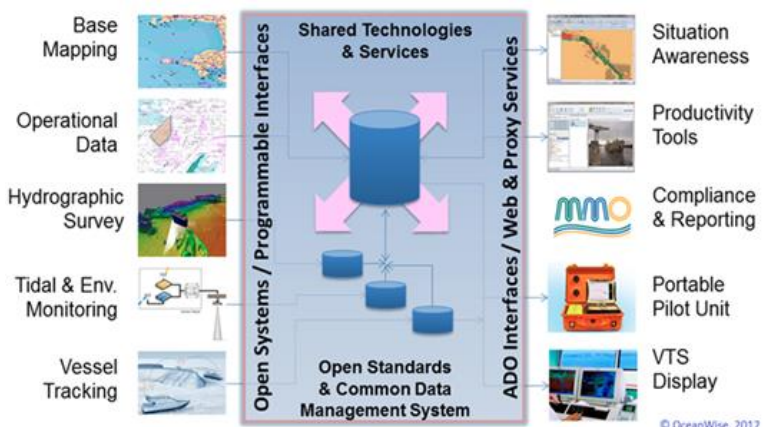
Tidal monitoring equipment for the project is being supplied by Valeport and includes it's new radar sensor, the VRS20. Radio and GSM telemetry equipment is being supplied Wood & Douglas and Scannex, respectively. System design, integration, and all control, database and publishing hardware and software is being provided by OceanWise. The system replaces the present system which has operated since the 1990s.

The system complements OceanWise's expertise and experience in delivering maritime information infrastructure projects and builds on work that we are undertaking for other UK ports. The aim is to ensure that environmental and operational data, critical to port operations and compliance, is reliably and easily accessible to all port personnel and wider stakeholders that require it. These projects are realising tangible benefits and are gaining significant interest from ports and other maritime organisations in the UK and overseas



Delivering Maritime Information Infrastructure

OceanWise's technology and expertise continues to delivery efficiency and other tangible benefits into ports and other maritime organisations. Customers now include ABP Southampton, BP Shipping, Centrica, Clydeport, Port of Liverpool, Port of London Authority and Wash Ports.



DISTRIBUTOR NEWS

MarineFIND Tile Mapping Services (TMS) for Marine Online Mapping provides competitively priced global and regional marine map sets that can be simply incorporated into online maps to provide valuable additional contextual information. Applicable to websites providing marine mapping for vessel tracking, maritime security, offshore infrastructure etc. it provides vital additional map layers to those conventionally used. 'Our objective is to ensure that marine data meets the needs of today's online users, but is also easy to incorporate into online maps by developers' says John Coleman, Business Manager, MarineFIND. A range of map data is available from MarineFIND as TMS including raster charts, vector themes, ICZM data and others. All are served as tracked services and require just a few lines of code to incorporate into online mapping applications.

www.findmaps.co.uk

emapsite: following on from the Welsh Government's consultation on Welsh Marine Conservation Zones last year, emapsite continues to provide seamless access to marine mapping across the Welsh Government into desktop GIS users, with a new contract for an enterprise wide web mapping service (WMS). Under the Welsh Government contract, emapsite creates and maintains a web mapping service for OceanWise Marine Themes offshore and coastal vector data. This data, supplied under licence, is rendered directly from emapsite's database as required on a just-in-time basis. With instant access to a wealth of mapping data, the GIS users and wider staff can make more informed and authoritative decisions where the impact of location is paramount.

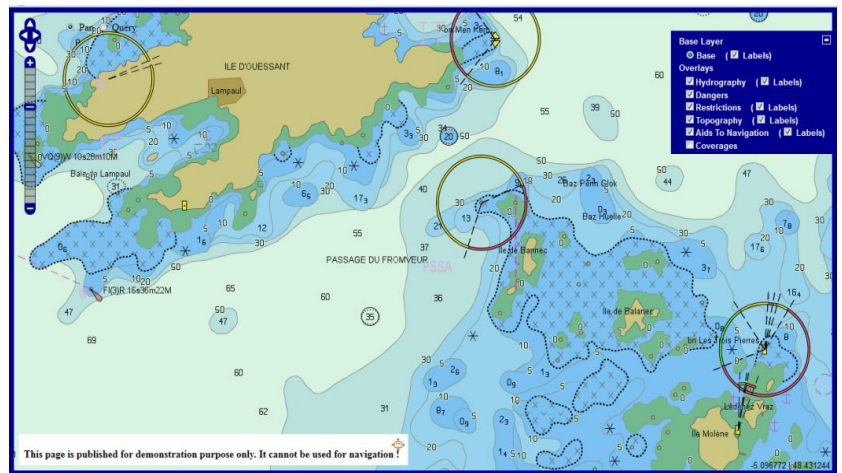
www.emapsite.com

New Electronic Navigational Chart (ENC) Web Service introduced

With our French based business partner Geomod, Ltd, we have developed a new 'ENC Web Service', delivering Electronic Navigational Charts (ENCs) direct to Desktop and Web GIS, and similar applications, using an OGC compliant WMS (Web Map Service). The ENC Web Service is available as an on-line subscription, where the WMS software and ENC database are hosted by OceanWise, or as a managed system in a secure environment on customer premises. In either case, the solution is completely scalable with new users and ENCs able to be added at any time. ENCs are produced by different Hydrographic Offices and provide official worldwide coverage.

Offering total flexibility the ENC Web Service is a true innovation in the market:

- The display in the form of layers means the WMS is fully configurable. It is possible to display all or only some layers and to switch seamlessly between different ENC scale or use bands.



- Official IHO (S-52 compliant) symbology is used as standard or tailored to the end user.
- Operates directly from ENC vector data, not prepared image tiles, thereby providing high image quality regardless of the display scale and allowing querying of objects via the WMS protocol.
- Additional business layers can be integrated to the ENC WMS Service or the technology can be integrated into an existing web service setup to provide a complete mapping solution.
- Built on the advanced technologies, the WMS Service offers exceptional performance with speed of display and rendering especially noteworthy.

Return to East Asia

OceanWise has been invited back to East Asia for the third time to run its acclaimed Data Management and MSDI Training Course. The course runs from 7-11 Oct 2013 and is being hosted by MPA, Singapore. The practical element of the course is being delivered by ESRI Asia.



Provision of Maritime Information Infrastructure at ABP Southampton

OceanWise has been working with the Hydrographic Department at ABP Southampton to extend the capabilities of its existing GIS as an operational efficiency tool as part of the development of a Maritime Information Infrastructure for the Port. The Hydrographic team are experienced GIS users and are now combining our Maritime Toolbar and its Extensions, specifically our Dredging and Licensing and Hydrographic Survey Management Extensions, to enable the port to develop a comprehensive knowledge of all their hydrographic related data. This is being seamlessly integrated with Port of Southampton's existing systems enabling the entire Port to benefit from integrated data management. Replacing some historical in-house developed systems has enabled the team to gain confidence in their long-term management of software and thereby make life easier for all!

By linking the data stored in Ocean Database (which resides behind the Maritime Toolbar Extensions), ABP Southampton can now view, at a glance, the latest operational status of the Port and Southampton Water approaches. This allows the GIS operator to visually depict how recently an area has been dredged, when hydrographic surveys are due, which may be overdue for survey as well as the current status of survey for any particular area. This linkage of tools is contributing to the management of the Port of Southampton's capital dredging campaign.



Maik Weidt, the Port Hydrographer at ABP Southampton commented that 'We are very pleased with the additional functionality the Maritime Toolbar and their Extensions will provide. It was time to move on from various systems and independent databases run side by side to an integrated central spatial SQL database incorporating OceanWise's Ocean Database structure (ODB). Using ABP's existing GIS infrastructure this will enable us to achieve significant efficiencies in the day to day support of safe port operations and while carrying out conservancy duties. Being able to migrate and keep most of our existing historical data was a very important aspect. Additionally, the new tools will expand ABP's dredging support and monitoring capability which will be utilised to support and scrutinise the progress in the upcoming Southampton Access Channel Dredge capital project (SACD).

Maritime Workshop 26th November 2013, Central London

This **free to attend** workshop be held at the School for Economic Science, Mandeville Place, London on 26th November. It will demonstrate ways in which effective data management best practice is now delivering significant efficiency and cost savings across a range of uses in the wider maritime domain. Underpinning these changes is GIS; a powerful and effective tool which allows users to visualise the planning, execution and onward managing of their operational activities in a graphical manner as the critical element of a **Maritime Information Infrastructure**. The theme of the workshop once again will feature how organisations are combining the technical and human elements in order to "extract more value from reduced resources".

For more information about the event please visit our websites at www.oceanwise.eu or www.cadcorp.com

To book your place contact:

John Pepper at john.pepper@oceanwise.eu Tel: 07733 266597

Fergus Craig at Fergus.craig@cadcorp.com Tel: 01438 747996