

Environmental Enclosures

Protection for your Monitoring Equipment



Standard Monobloc Enclosure



Hot Climate Enclosure

Suitable protection for scientific and telemetry equipment is an essential component of any environmental monitoring system, onshore and offshore.

OceanWise is able to provide advice as part of our system design service and optionally provide suitable enclosures for different environments and installation types. There are currently two enclosures available as standard, a 'monobloc' enclosure for temperate climates and a vented 'metspec' enclosure for hot climates where the maximum ambient temperature regularly exceeds 35°C (95°F).

OceanWise supplied enclosures are manufactured from proven robust materials and are carefully chosen and configured as an integral component of your overall monitoring system.

Features include a door switch which records an event in **Ocean Database** and raises an alert on **Port-Log.net** or within the **Port-Log System**, sending an email or SMS to specified contacts, if required.

Key Benefits:

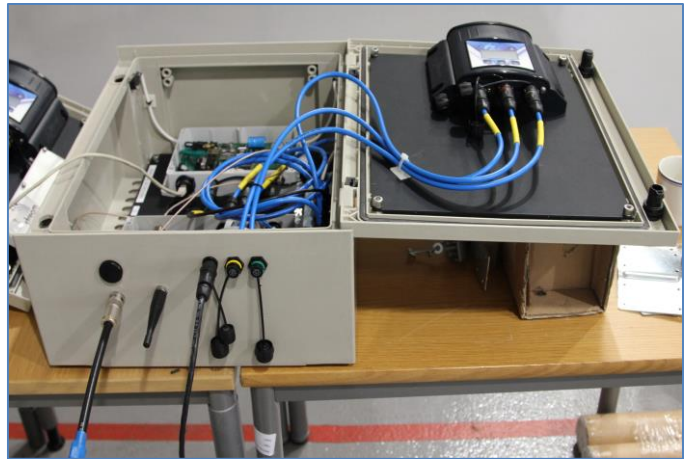
- **Off-the-shelf enclosure complies with EMC industrial and other standards**
- **Integral component of your environmental monitoring system**
- **Proven materials and technologies from established manufacturers**
- **Tested in marine and other harsh environments**
- **Mountings and glands support different equipment configurations**
- **Security features e.g. door switches incorporated into Port-Log.net and Port-Log System**

TYPICAL INSTALLATIONS

The image (right) shows one of the standard instrument enclosures ready for installation containing a Water Level Recorder, ip.buffer **Smart Telemetry Unit** with GSM modem, UHF radio (optional), internal wiring block and door switch.

A separate enclosure can be used to house a battery and charging circuits, where back-up power is required.

The enclosures, connectors and engineering are specified and executed to a high standard and have the following technical characteristics:

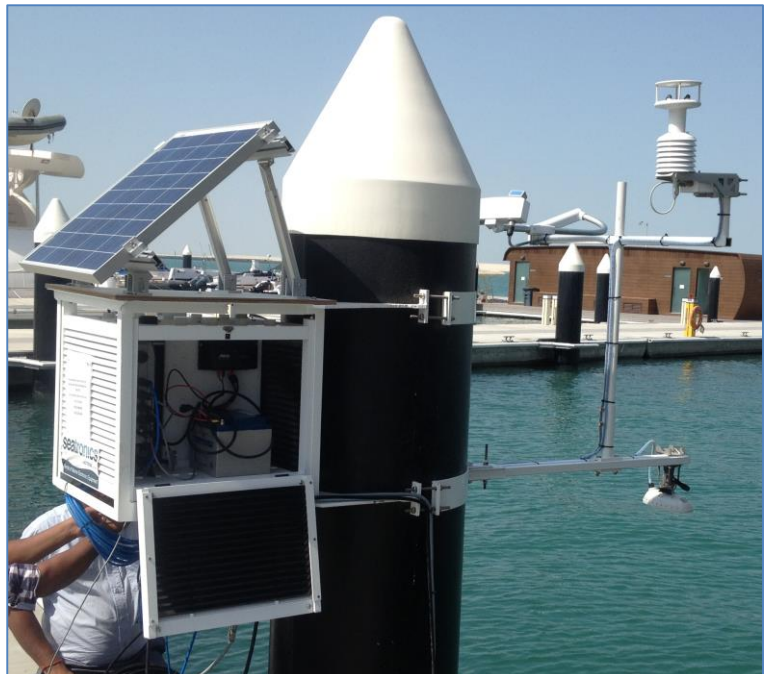


- 'Monobloc' wall-mounting enclosure made from polyester reinforced with fibreglass
- Protection to IP 66 in according to IEC 60529
- Resistance to external mechanical impacts
- Locking device outside sealed area, guaranteeing the tightness of IP 66 over time
- Door opening angle to 180° for easy access to all equipment
- Bosses for accessory-fixing inserts
- Fixing of rear accessories on 4 M8 studs
- Grid pattern with a pitch of 25 mm on the back of the door.

The above enclosure has been fully 'Industrial EMC' tested with the equipment and instrumentation listed above, for which certificates are available. A higher level of EMC testing can be arranged.

An alternative enclosure for hot climates, where the maximum daily temperature regularly exceeds 35° Celsius (95° Fahrenheit), is also available. The enclosure in the image (right) has been installed on a pile in the United Arab Emirates (UAE) supporting the following equipment;

- Water Level Recorder
- ip.buffer **Smart Telemetry Unit**
- Battery, solar panel and AC charging equipment
- Radar Level sensor
- Weather sensor
- Visibility sensor



The enclosure is manufactured from ultra-tough acrylic, polycarbonate and aluminium, thus providing the very best anti corrosion and ultra violet light protection in severe weathering and temperature extremes. Panels made of the same material as the outer casing provide secure internal mountings for a range of different equipment configurations.