



where your data matters



Intelligent Marine and Coastal Mapping Data

When you need mapping data that is fit for purpose, in the right format, accurate and up to date



Marine Themes Vector



Marine Themes DEM



Raster Charts XL



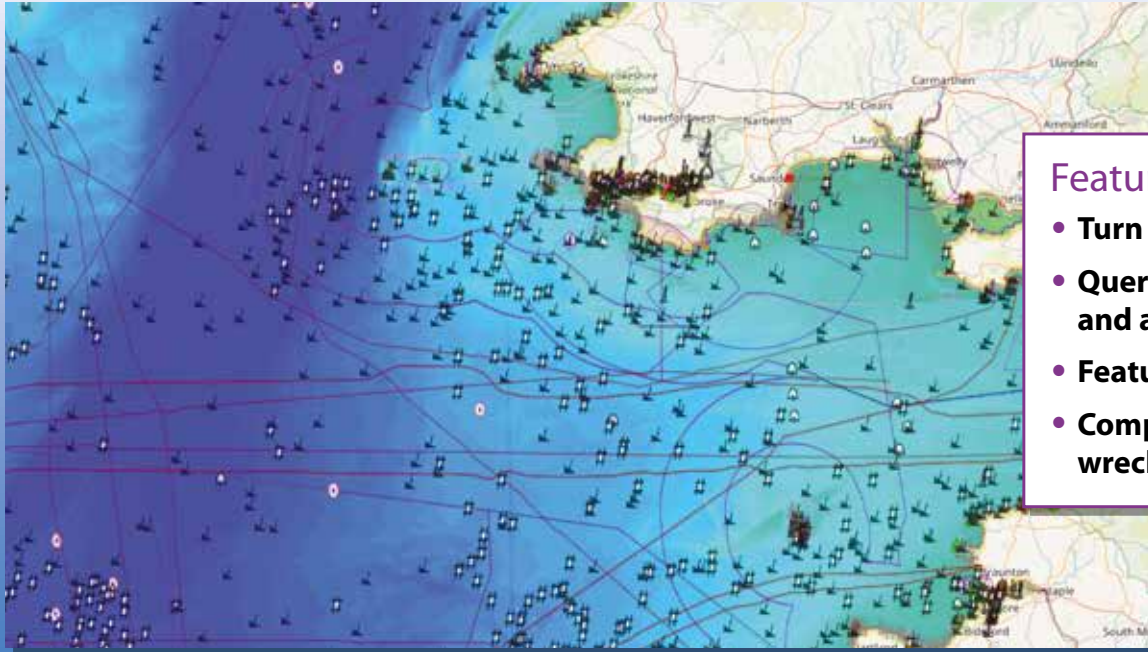
Electronic Navigational Charts

www.oceanwise.eu

Enjoy the confidence of working with marine data experts

Marine Themes Vector

*Comprehensive, flexible and intelligent marine mapping
for manipulation and analysis*



Features

- Turn layers on/off
- Query features and attributes
- Feature catalogue
- Comprehensive wrecks layer

Marine geographical features are grouped according to type as follows:

Elevation

Shipwrecks and Obstructions

Industrial Facilities

Transport

Administrative and Management Units

Geographical Regions



Desktop GIS in use

Our intelligent marine and coastal mapping data are designed to be compatible with all leading desktop and web-based Geographical Information Systems (GIS).

Marine Themes Digital Elevation Model (DEM)

Multi-purpose high resolution, seamless bathymetry data for analysis and interpretation



Features

- **Created from best available survey data infilled with chart data**
- **Ready for immediate use in GIS**
- **Coverage layer provides information on data sources**
- **Can be combined with Marine Themes Vector or Raster Charts XL for a great looking base map**

Source survey data provides highly detailed information giving an amazing insight into the shape of the seabed.

They are quick and easy to use in planning, engineering, asset management, operations, regulation and a multitude of other applications.

Enjoy the confidence of working with marine data experts

Raster Charts XL

Land areas are removed from the familiar nautical charts, to allow inclusion of alternative digital land mapping of your choice



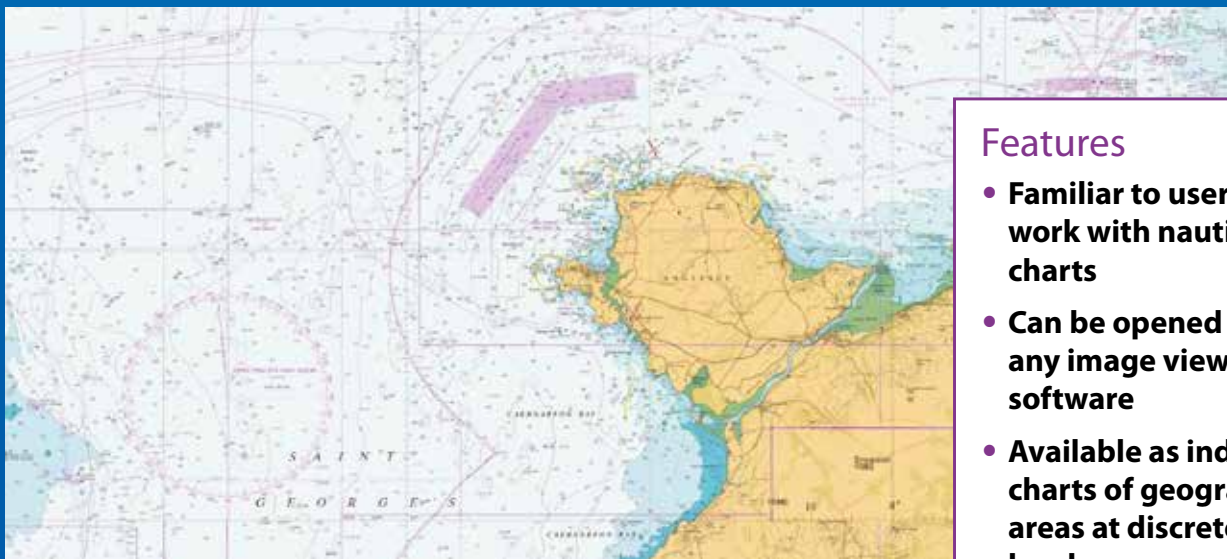
Features

- **Familiar to mariners**
- **Easy to use in GIS**
- **Available as individual charts or as a seamless web map service**
- **Can be used with most appropriate land mapping**

Seamless OGC compliant Web Map Tile Service is perfect as a marine background layer in your web mapping applications.

Raster Charts

Familiar nautical chart base map, ready for immediate use in GIS or other applications



Features

- **Familiar to users who work with nautical charts**
- **Can be opened using any image viewer software**
- **Available as individual charts of geographic areas at discrete scale levels**
- **Wide area coverage**

ENC Web Map Service

*Electronic Navigational Chart (ENC) data for immediate use
in desktop and web-based GIS*



Features

- **Familiar to mariners**
- **Turn layers on/off**
- **Features can be queried (subject to GIS being used)**
- **Data identical to that used on ECDIS for navigation**

By using standard published Electronic Nautical Charts, worldwide coverage is available, allowing access to mapping data wherever your project take you.

Your Choice! Which Data best suits your needs?

Our data products are available as datasets in a variety of GIS compatible formats or as OGC compliant Web Mapping Services, as follows:

Data Product	Dataset	Data Service
Marine Themes Vector	Yes	Yes
Marine Themes Digital Elevation Model	Yes	Yes
Raster Charts	Yes	No
Raster Charts XL	Yes	Yes
ENC Web Map Service	No	Yes

Don't put your operations or projects at risk by using the wrong data. By coming to us, you will enjoy the confidence of having the right data and means of delivery for your needs.

Enjoy the confidence of working with marine data experts



where your data matters



www.oceanwise.eu

Enjoy the confidence of working with marine data experts
For information contact info@oceanwise.eu or phone +44 (0)1420 768262