

# Managing Data for Greater Risk Mitigation



# About Us

2002

SeaRoc Group was Formed



2006

SeaPlanner Development Started

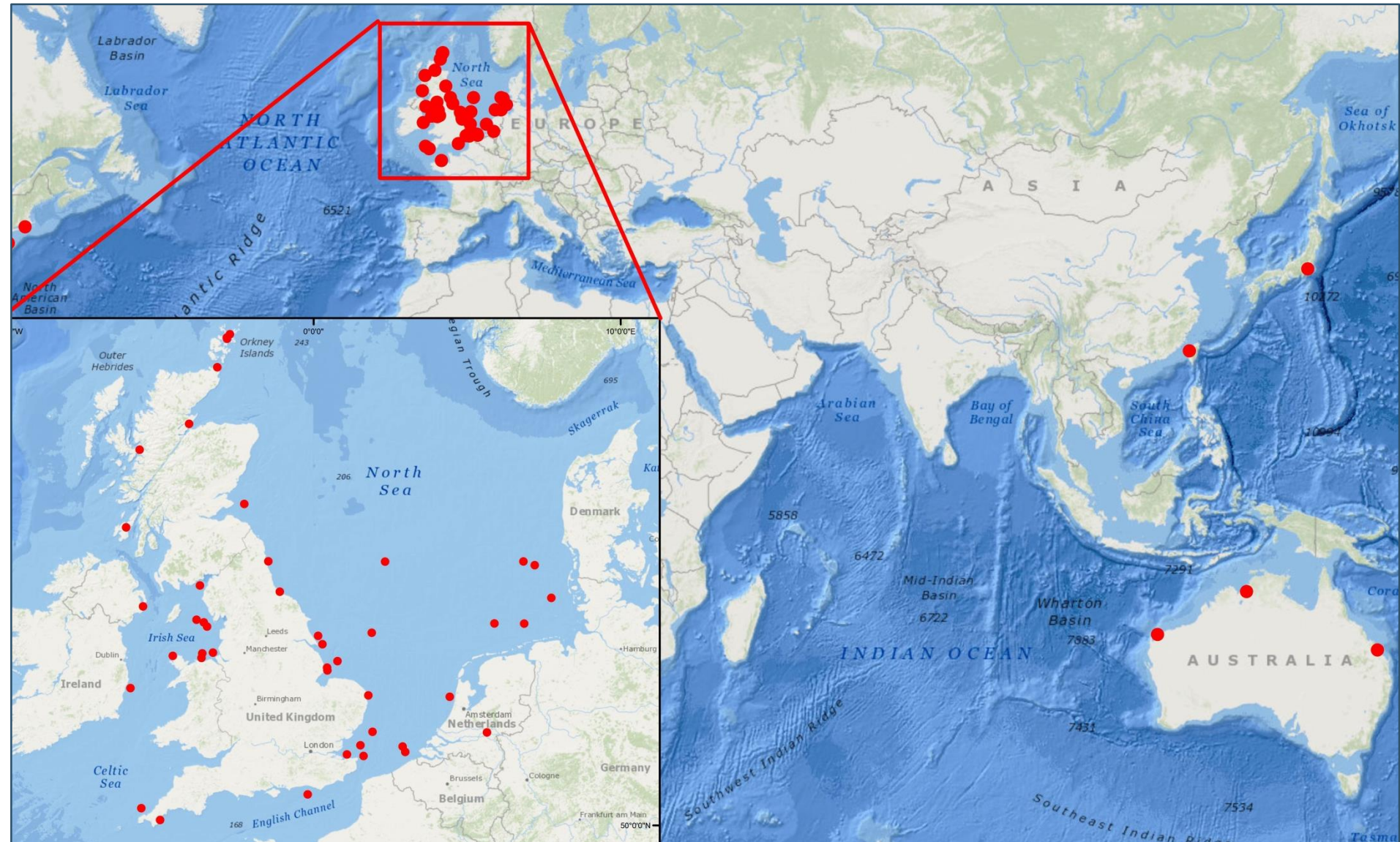


2010

SeaRoc Group Acquired by Fred Olsen Ltd



# Project History



# Data issues

- Incorrect data
- Unavailable data
- Missing data
- Data in multiple formats
- Too much data
- Live data feeds being interrupted

# What are the risks offshore?

- Uncontrolled personnel movements and access
- Incidents
- Work delays
- Cable faults
- Legal Issues

A photograph of an offshore oil rig and a support vessel at sea. The rig is a tall, yellow cylindrical structure with a platform at the top. A support vessel, also yellow, is positioned next to the rig. In the background, two more similar rigs are visible on the horizon. The sky is overcast and the water is dark blue.

# Real Life Examples

# Thanet Offshore Wind Farm

**Risk:**

**Claim for Whip Lash**

**Mitigation:**

**Prevented legal action**



# Westermost Rough Offshore Wind Farm

**Risk:**

**Navigational Errors**

**Mitigation:**

**Prevented legal action**





# Teesside Offshore Wind Farm

Risk:

Vessels Speeding

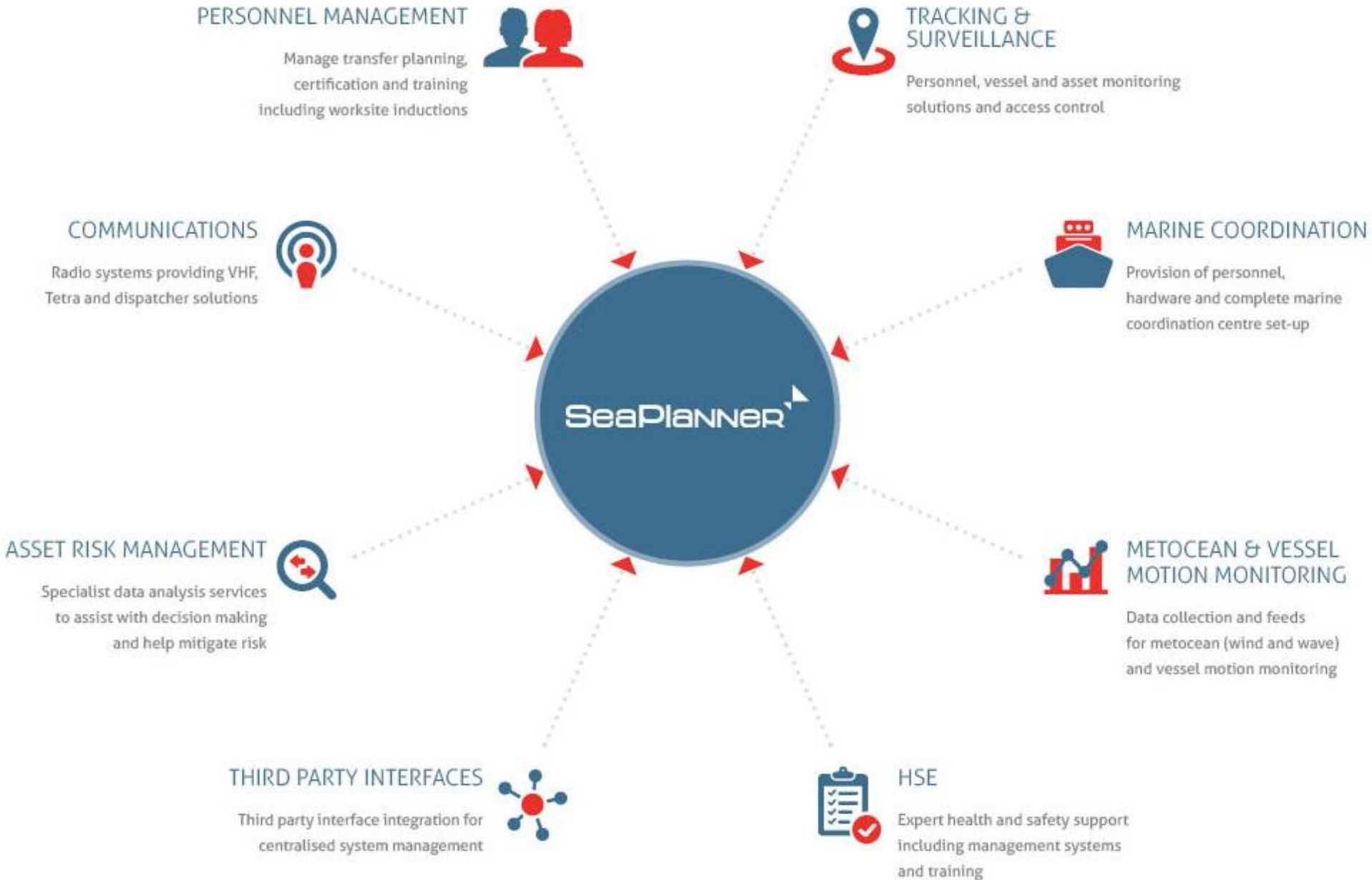
Mitigation:

Alerted Marine Coordinators  
to some vessels speeding




# How SeaPlanner Reduces Risks





# Personnel Manager

# SeaPlanner

SeaPlanner  demouser Nordsee One

## PERSONNEL


Home > Personnel

[Add New Person](#) [Delete](#) [Person Icon](#) [Group Icon](#) [Export to Excel](#) [Export to PDF](#)

Drag a column header and drop it here to group by that column

Id	First Name	Last Name	Job Title	Company	Access	Department	Telephone Nu...	Nationality	M
51	Chris	Evans	Engineer	Kier Infrastructure and Overseas Ltd	Full Access	Construction		British	
52	Zoes	Ball	H&S Advisor	DONG Energy	Full Access	Construction	01289 989992	British	07888
53	Soniad	Smith	Equipment Operator	SeaPlanner Limited	Full Access	Construction	01289 989899	British	07888
54	Paul	Donnelly	Electrical Contractor	NPS					
55	Simon	Shore	H&S Advisor	SeaPlan					
56	Andrew	Perkins	Engineer	EDF-ENS					
58	Tim	Smith	Engineer	EDF-ENS					
59	Harry	Shore	Engineer	EDF-ENS					
62	Person111451448	Test5341577	Engineer	EDF-ENS					
63	Person29053630	Test178139356	Engineer	EDF-ENS					

Limited, All Rights Reserved.

SeaPlanner  Messages 0 demouser N1

## CERTIFICATES

[Export to Excel](#) [Export to PDF](#) [Group Icon](#) [Person Icon](#)

Drag a column header and drop it here to group by that column

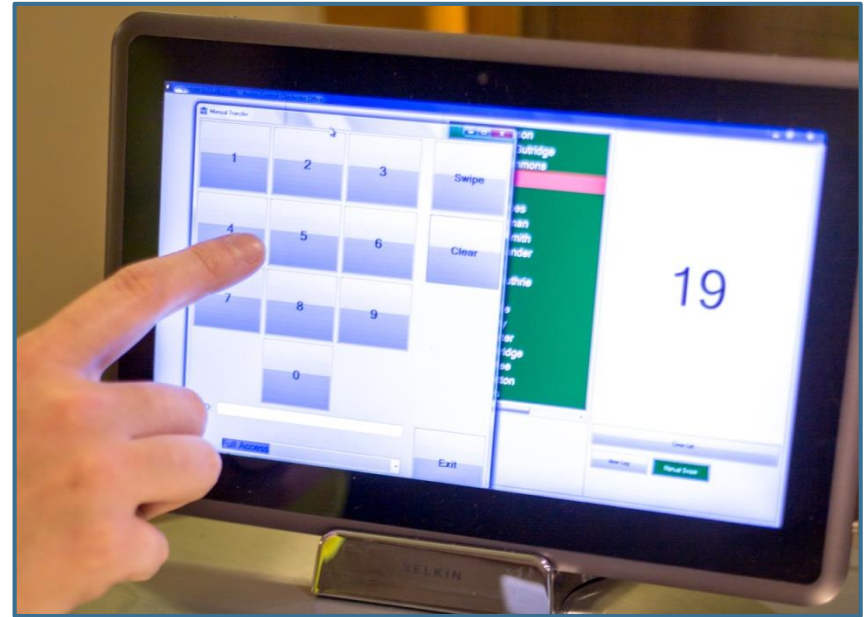
Person Id	First Name	Last Name	Company	Job Title	Training	Type	Expiry Date
62	Daryl	Child	SeaPlanner Limited	Engineer	Nordsee One Induction	Induction Result	08/11/2016
1171	Craig	Johnson	GeoSea	Engineer	Medical	Expiry Date	17/11/2016
86	Billie	Armstrong	EDF-ENSUK	Engineer	Nordsee One Induction	Induction Result	29/11/2016
55	Simon	Shore	Deep Ocean	Chief Mate	Passport Expire	Expiry Date	01/12/2016
58	Tim	Smith	Deep Ocean	Master	GWO Manual Handling	Expiry Date	06/01/2017
58	Tim	Smith	Deep Ocean	Master	EBS	Expiry Date	06/02/2017
53	Soniad	Smith	SeaPlanner Limited	Equipment Operator	Passport Expire	Expiry Date	31/03/2017
51	Chris	Evans	Siemens AG	Technician	Passport Expire	Expiry Date	02/04/2017

©2016 SeaPlanner Limited, All Rights Reserved. [Self Help](#) [Help](#)

# Automated Personnel Tracking

## SeaPlanner

- RFID access swipe cards
- Control site access levels
- Exact location of personnel is known at all times
- Complete audit of movements



# Asset Manager

## SeaPlanner

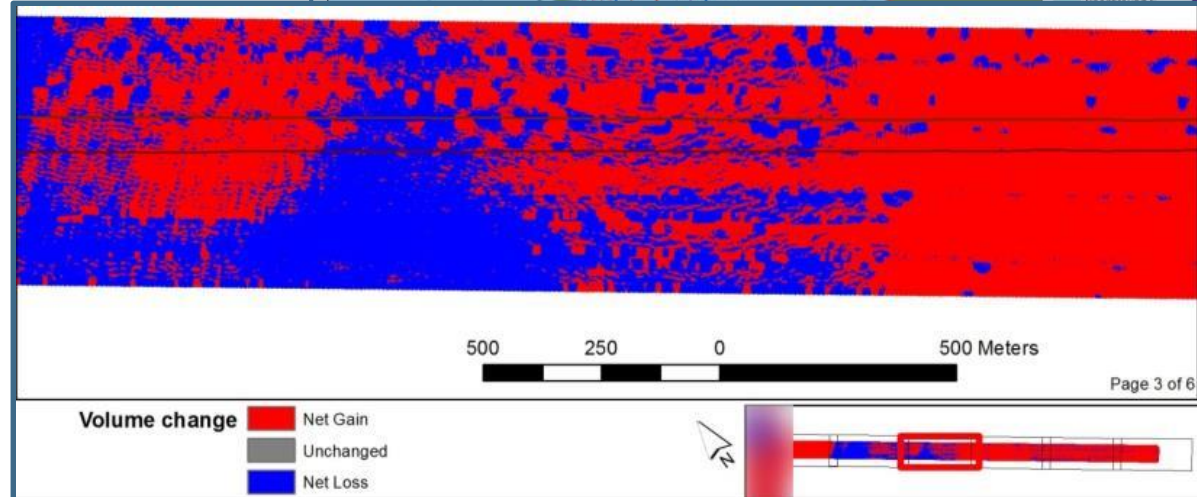
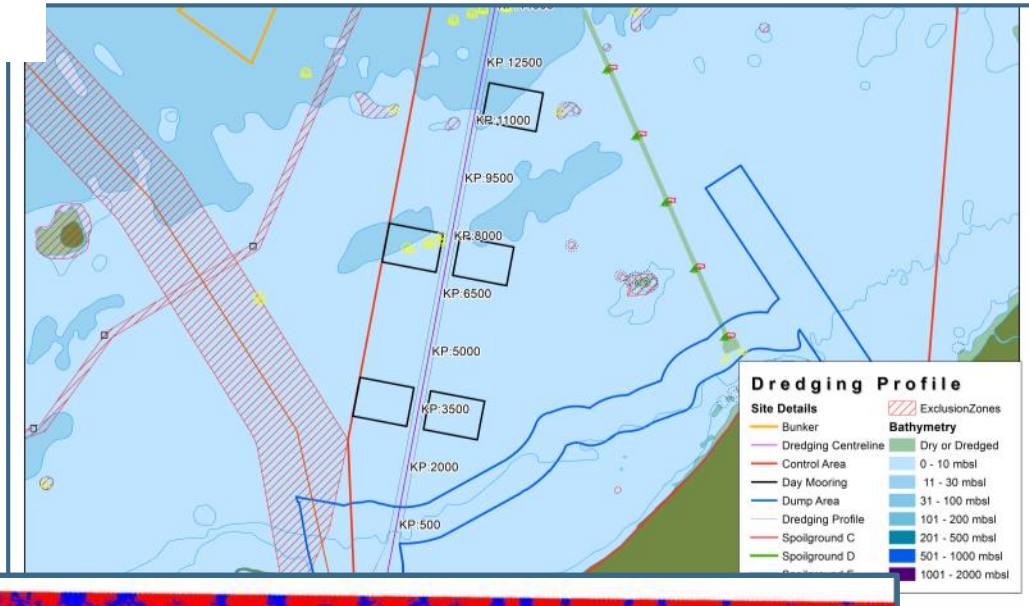
- Register all assets and equipment with certification
- Add expiry dates
- Record defects
- Allocate dates of unavailability
- Effectively manage scheduling and availability



# Asset Manager

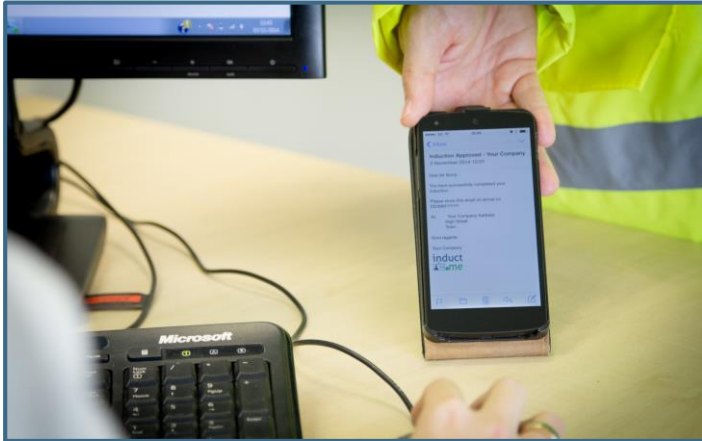
## SeaPlanner

- Historical & Non-Operational data
- Overview of all CAD & GIS Site Plans
- View analysis results
- Share data with all contractors



# Induction Manager

# SeaPlanner



- Quick and efficient inductions
- Reduce delays to works caused by induction process
- Effectively manage risk
- Easy to monitor and review
- Easily produce reports for auditing
- Maintain full control of your workforce



# Metocean Manager

## SeaPlanner

- Weather and sea state monitoring
- Live site conditions
- Linked to forecast & observed metocean feeds
- Weather windows & operating constraints

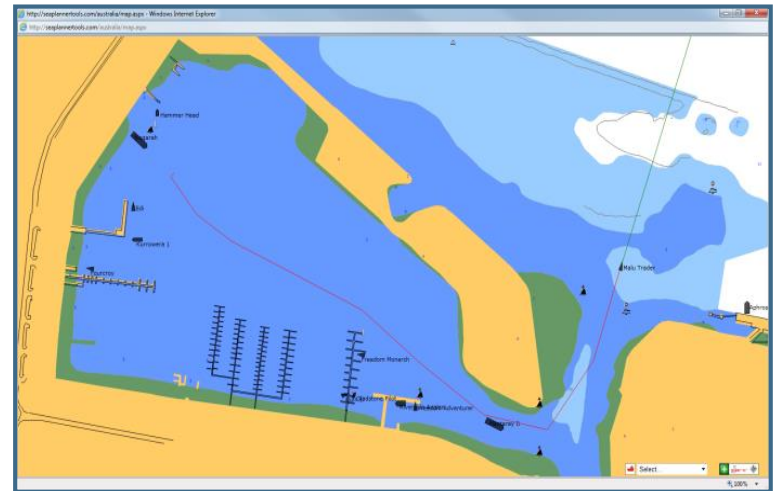
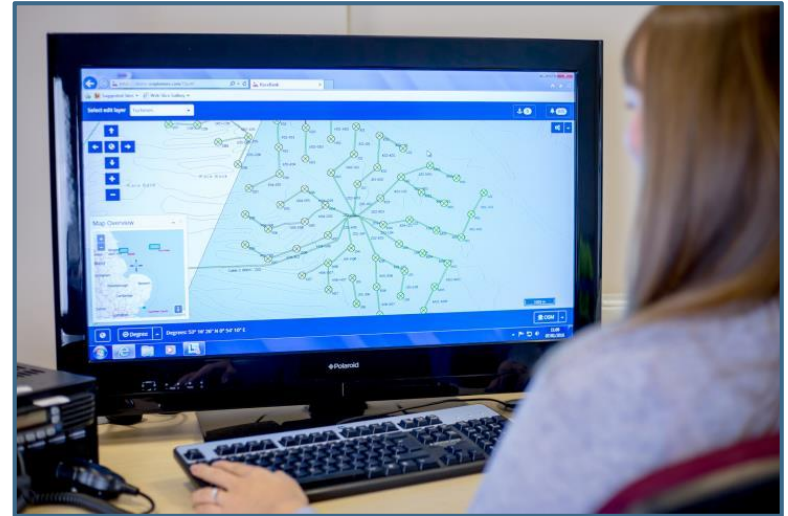


# Operations Manager

## SeaPlanner

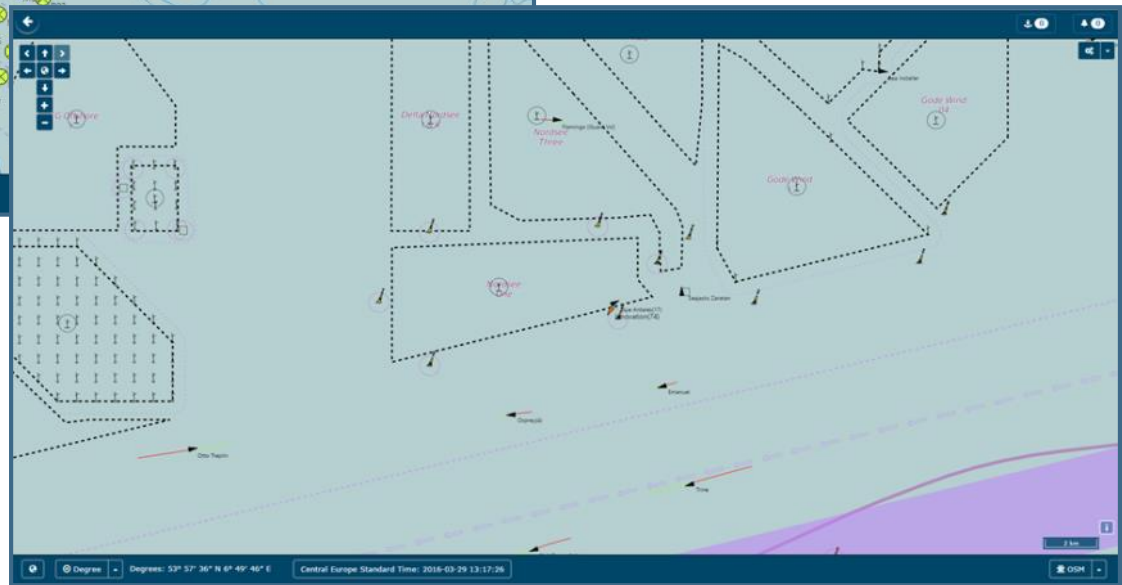
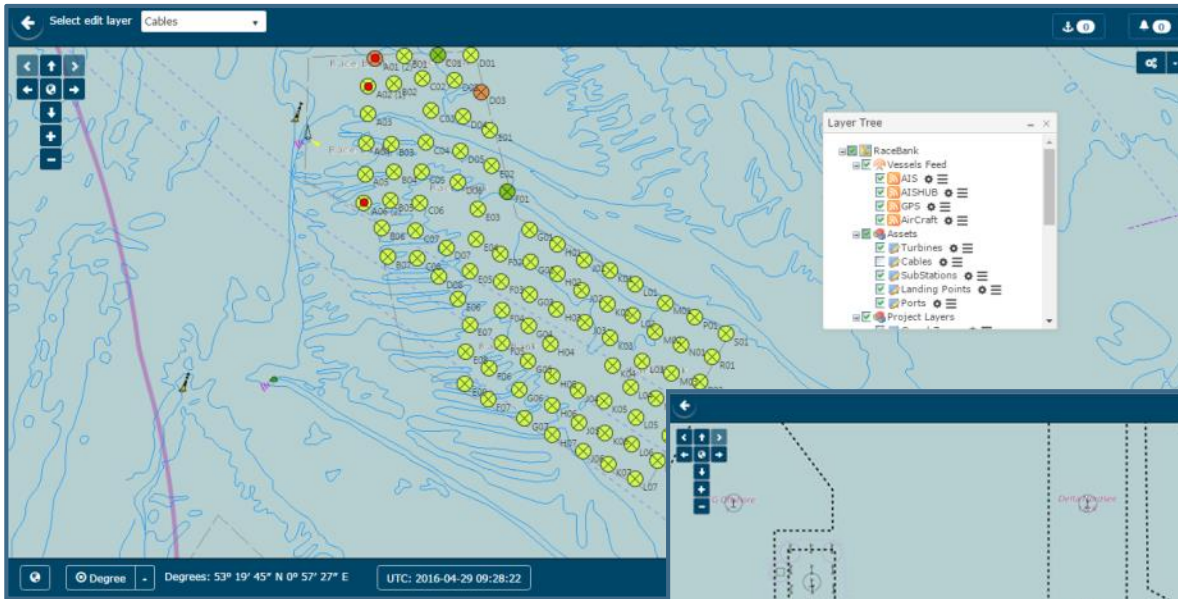
Core module for controlled and effective project management

- Interactive layers
- Alerts
- Personnel, asset, vessel and air traffic tracking



# Operations Manager

# SeaPlanner



# Key Factors to risk mitigation

- **Health and Safety** – offshore safety and competency/certification management
- **Asset Protection** – preventing costly damages
- **Operational efficiency** – optimising assets and limit downtime
- **Maximise data value** – confident, data-driven decision making



Web: [www.searoc.com](http://www.searoc.com)

Email: [info@searoc.com](mailto:info@searoc.com)

Phone: +44(0)1243 816 606

