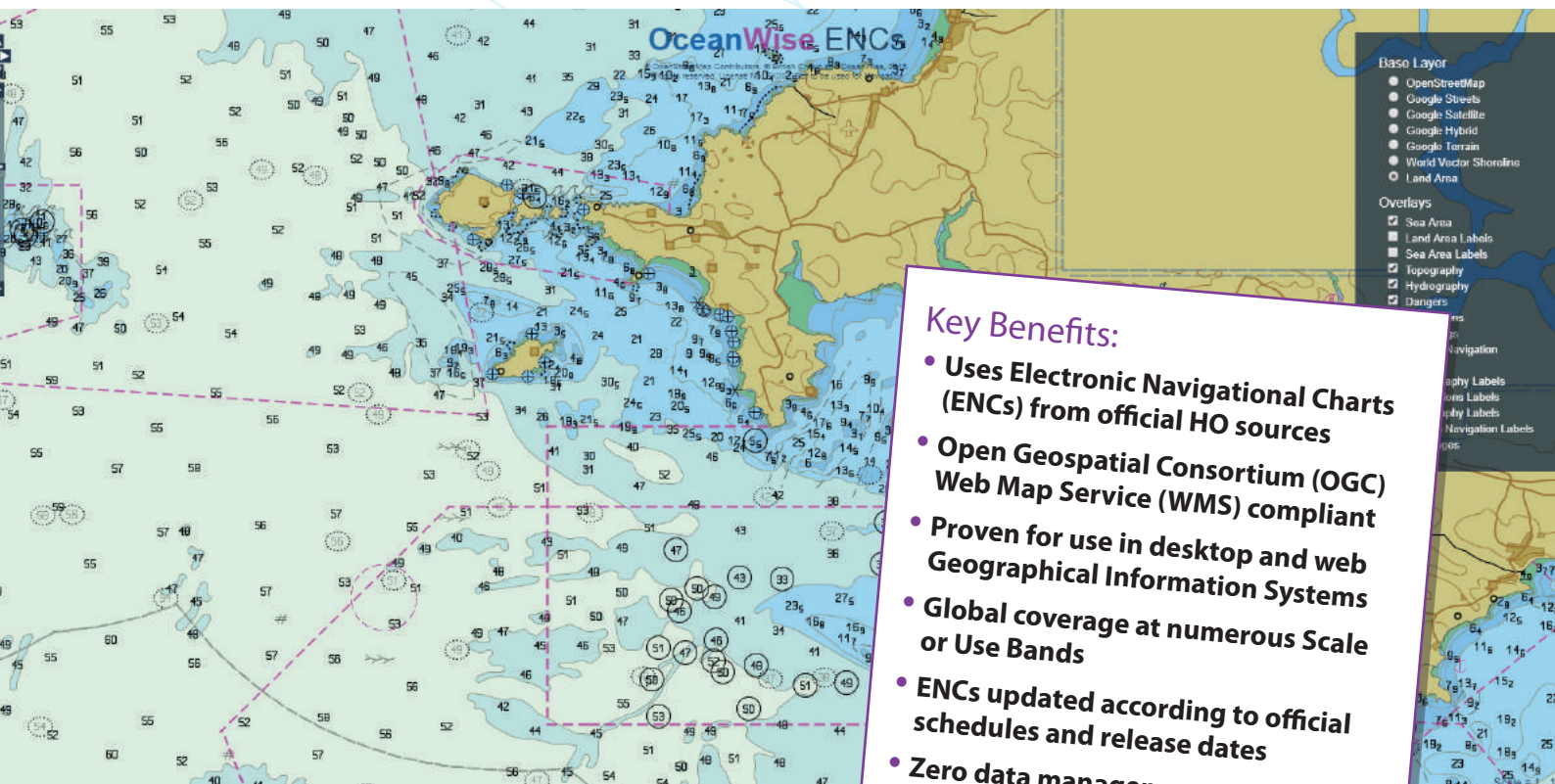


ENC Web Map Service

*Electronic Navigational Charts for immediate use in Desktop
and Web based Geographical Information Systems (GIS)*



Key Benefits:

- Uses Electronic Navigational Charts (ENCs) from official HO sources
- Open Geospatial Consortium (OGC) Web Map Service (WMS) compliant
- Proven for use in desktop and web Geographical Information Systems
- Global coverage at numerous Scale or Use Bands
- ENCs updated according to official schedules and release dates
- Zero data management overhead as ENCs are served remotely

OceanWise's ENC Web Map Service delivers official Electronic Navigational Charts (ENCs) direct to Desktop and Web based Geographical Information Systems (GIS) – and similar applications – using an OGC compliant WMS (Web Map Service).

The **ENC Web Map Service** is available as an on-line subscription, where the WMS software and ENC database are hosted by **OceanWise**, or as a managed system in a secure environment at the customer's premises. With either option, the solution is completely scalable in that new users and ENCs can be added at any time. ENCs are produced by different Hydrographic Offices (HOs) and provide official worldwide coverage.

Offering total flexibility, the **ENC Web Map Service** is a true innovation in the market and provides the following features:

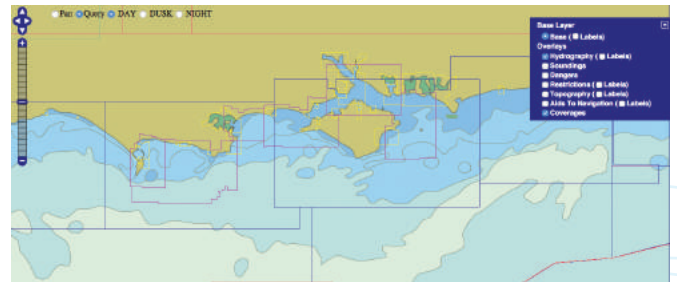
- The display in the form of layers means the WMS is fully configurable. It is possible to display all or specific layers and to switch seamlessly between different ENC Scale or Use bands.
- Official IHO (S-52 compliant) symbology is used as standard.
- ENC vector data is used directly, and not via prepared image tiles, thereby providing high image quality regardless of display scale.
- Utilising advanced technologies from OceanWise partner, Geomod, the **ENC Web Map Service** offers exceptional performance with speed of display and rendering.
- Layers can be turned on or off including your land mapping or aerial imagery of choice.

Proven for use in GIS

OceanWise's **ENC Web Map Service** is proven to work with all major GIS applications, including; Esri ArcGIS, Cadcorp SIS and QGIS. The **ENC Web Map Service** is also compatible with OpenLayers, meaning ENCs can easily be incorporated into web based mapping applications.

ENC Coverages

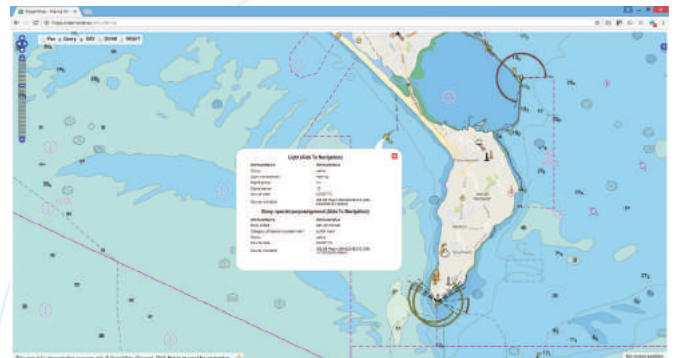
The **ENC Web Map Service** provides a coverage layer which allows the user to easily identify the ENCs available. New ENCs can be ordered at any time and are usually added to the **ENC Web Map Service** within 24 hours.



Screenshot showing ENC coverage layers.

WMS Query

The **ENC Web Map Service** provides an OGC compliant method of querying individual geographic features immediately. The feature is available in web and desktop GIS, where it is supported by the target system.



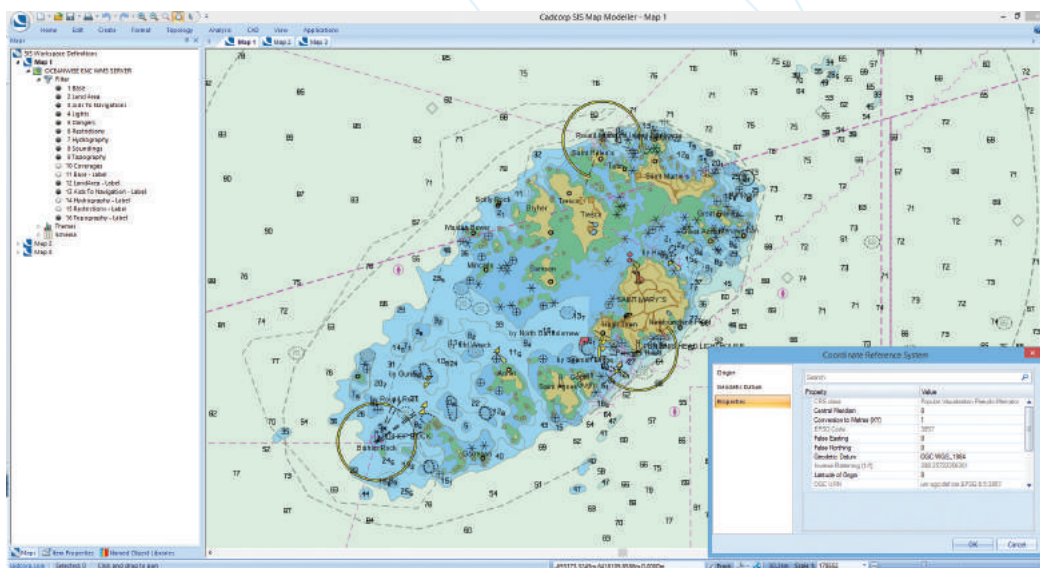
Query results from interrogating the Web Service

Alternative Land Mapping

Land objects included in ENCs can be turned off, so that users can select from alternative land mapping datasets or services.



ENC Web Map Service combined with OpenStreetmap land mapping



ENC Web Map Service in desktop GIS (Cadcorp SIS)

