

Where land and sea collide

Warren Vick
Europa Technologies Ltd.



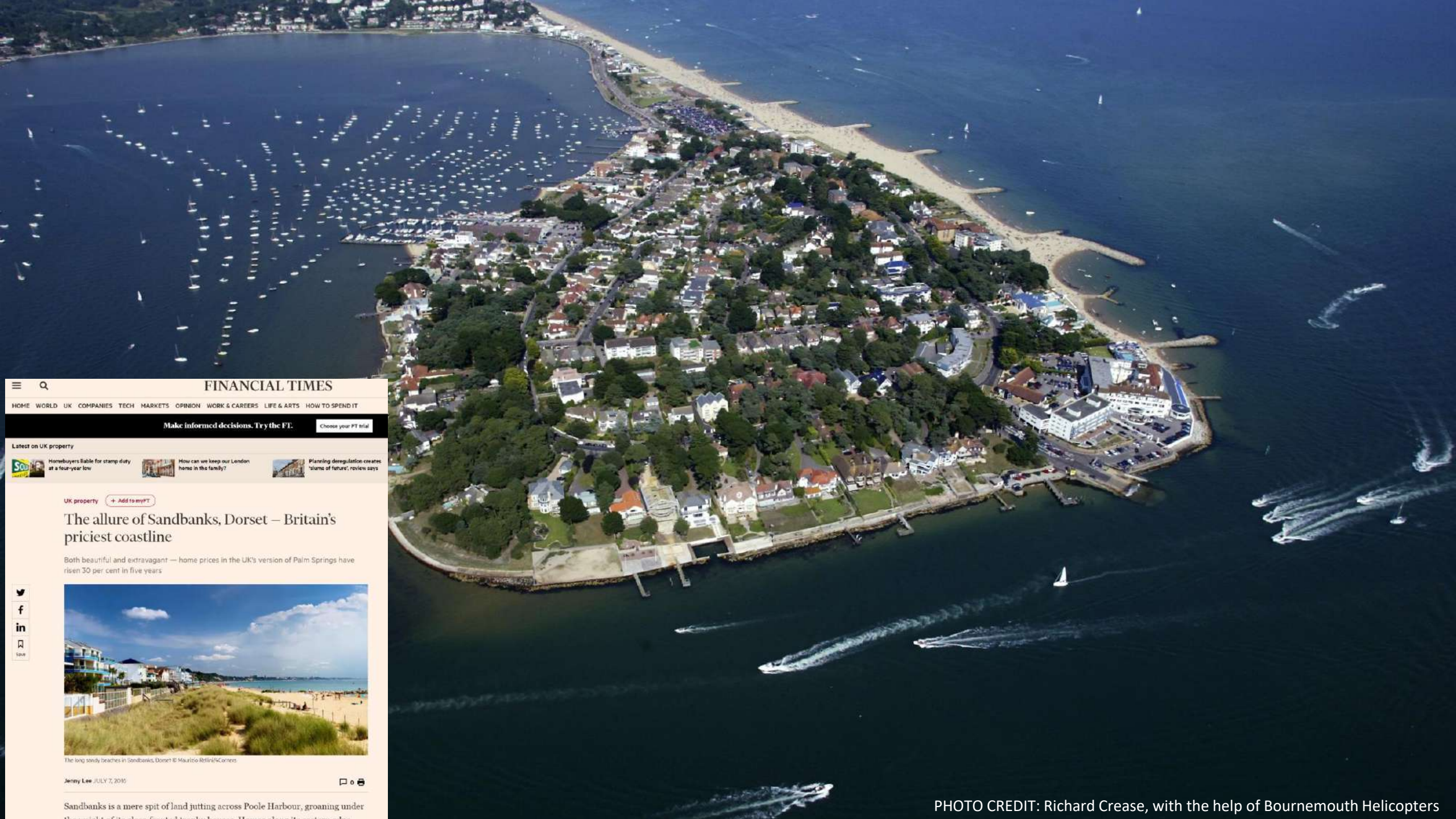
Marine Data Management and GIS Workshop





The human fascination with the land-sea interface

PHOTO CREDIT: Richard Crease, with the help of Bournemouth Helicopters




Q


FINANCIAL TIMES


HOME WORLD UK COMPANIES TECH MARKETS OPINION WORK & CAREERS LIFE & ARTS HOW TO SPEND IT

Make informed decisions. Try the FT. Choose your FT trial

Latest on UK property

 Homebuyers blame for stamp duty at a four-year low


 How can we keep our London home in the family?

 Planning deregulation creates 'rooms of future', review says

UK property + Add to myFT

The allure of Sandbanks, Dorset – Britain's priciest coastline

Both beautiful and extravagant — home prices in the UK's version of Palm Springs have risen 30 per cent in five years

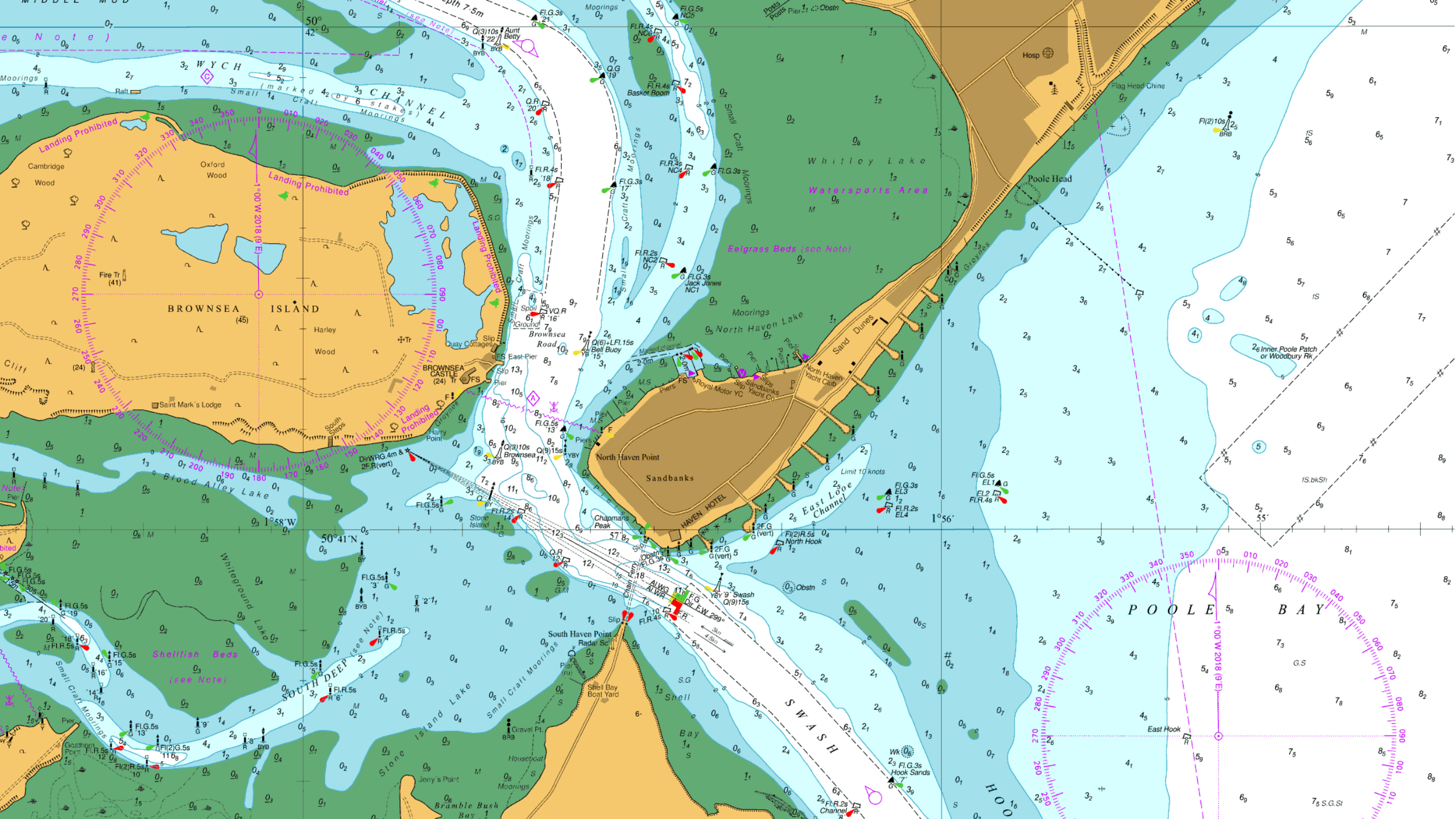


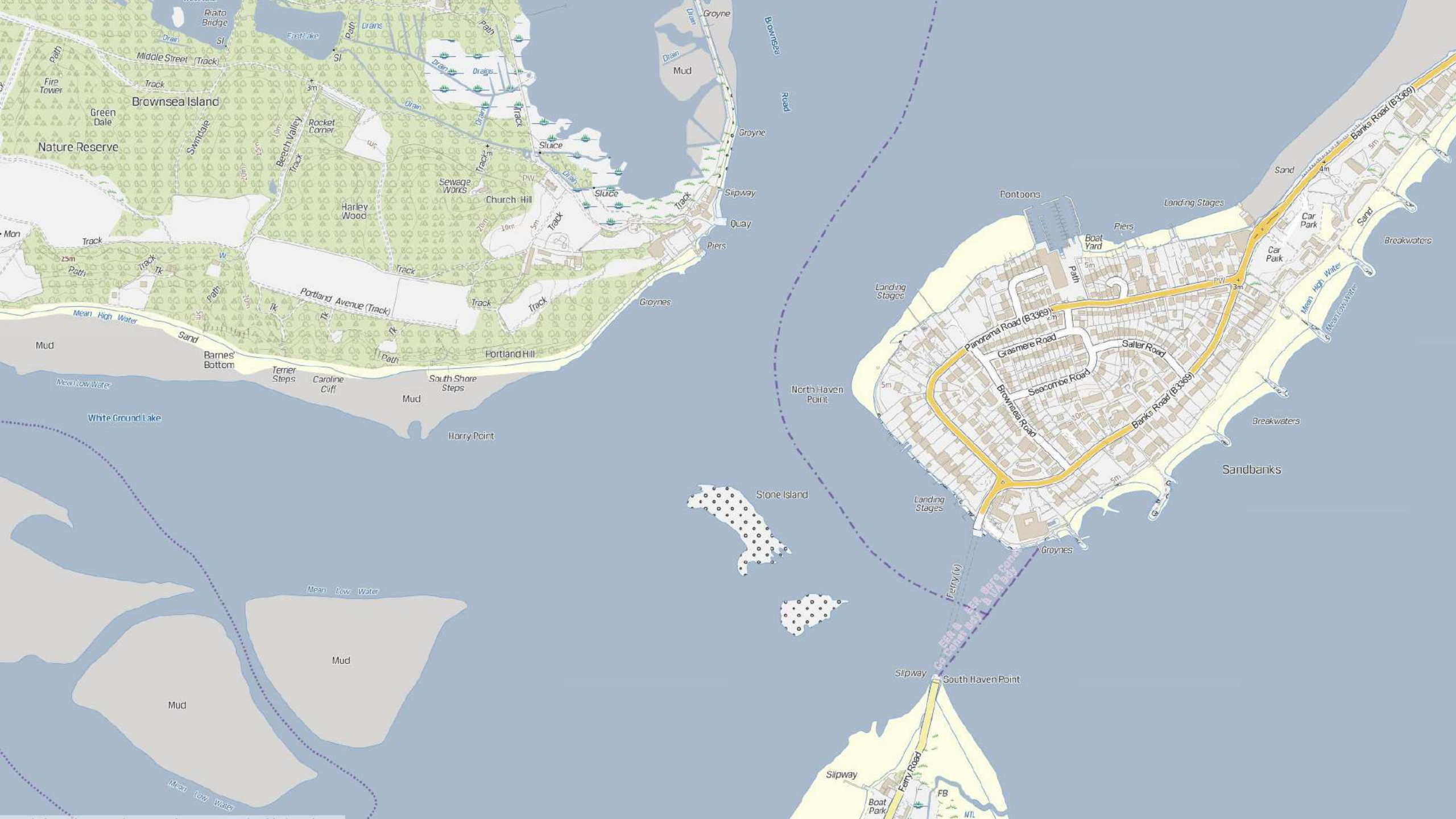
The long sandy beaches in Sandbanks, Dorset © Maurizio Rellini/SCOnline

Jenny Lee JULY 7, 2010

Sandbanks is a mere spit of land jutting across Poole Harbour, groaning under the weight of its class. Frontal beach houses. House along the water's edge.

PHOTO CREDIT: Richard Crease, with the help of Bournemouth Helicopters







Different maps, different agencies, different domains,
but (IMHO) demand for holistic views is increasing.

Challenges in combining land & sea map layers / services

Challenges in combining land & sea map layers / services

but first some background (literally)
and a cartographic warning...





Please don't do this...



...and definitely don't do this.



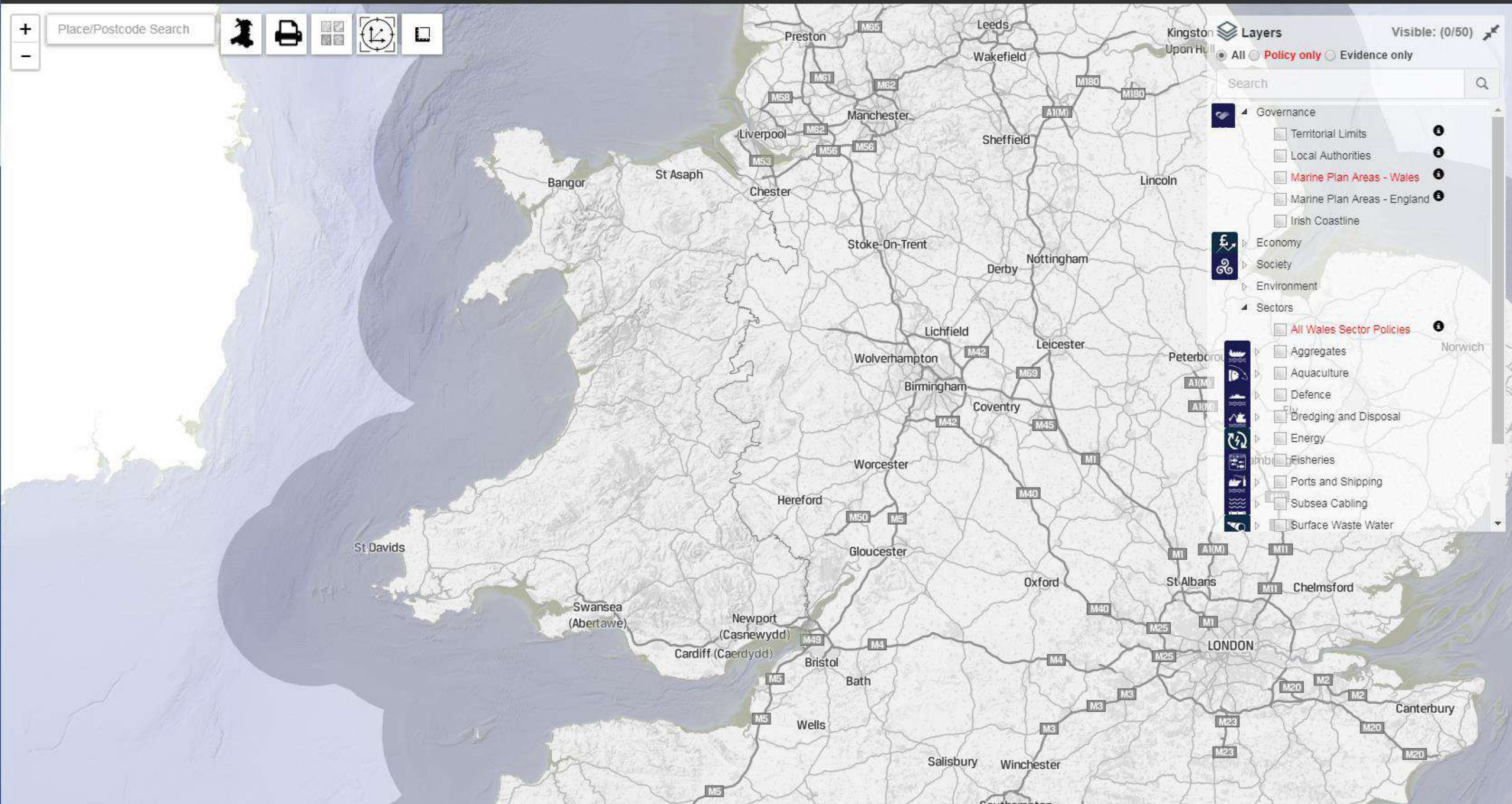




+

-

Place/Postcode Search



Layers

Visible: (0/50)

☐ All ☒ Policy only ☐ Evidence only

Search

Governance

☐ Territorial Limits 1

☐ Local Authorities 1

☒ Marine Plan Areas - Wales 1

☐ Marine Plan Areas - England 1

☐ Irish Coastline

Economy

Society

Environment

Sectors

☒ All Wales Sector Policies 1

☐ Aggregates

☐ Aquaculture

☐ Defence

☐ Dredging and Disposal

☐ Energy

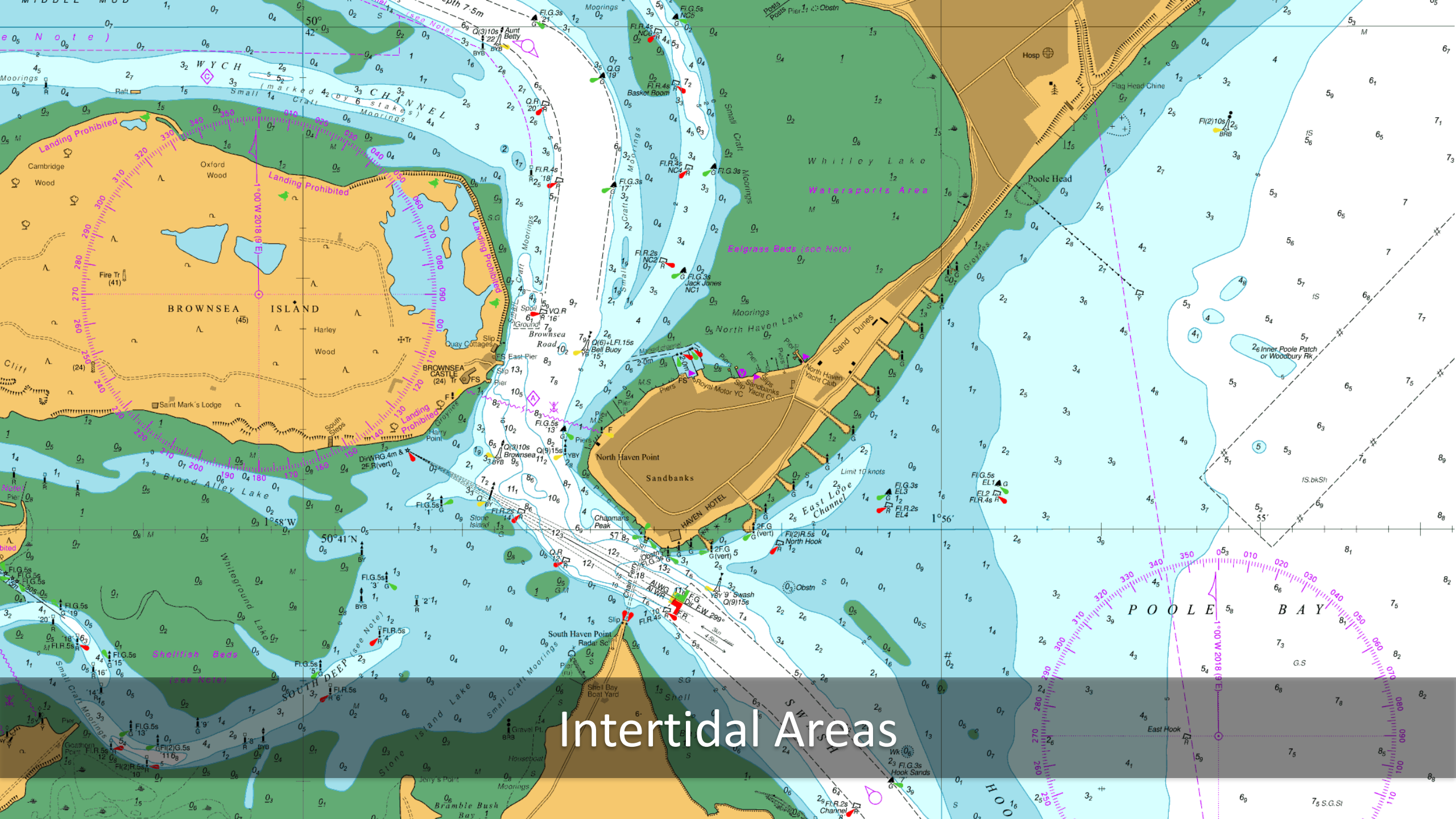
☐ Fisheries

☐ Ports and Shipping

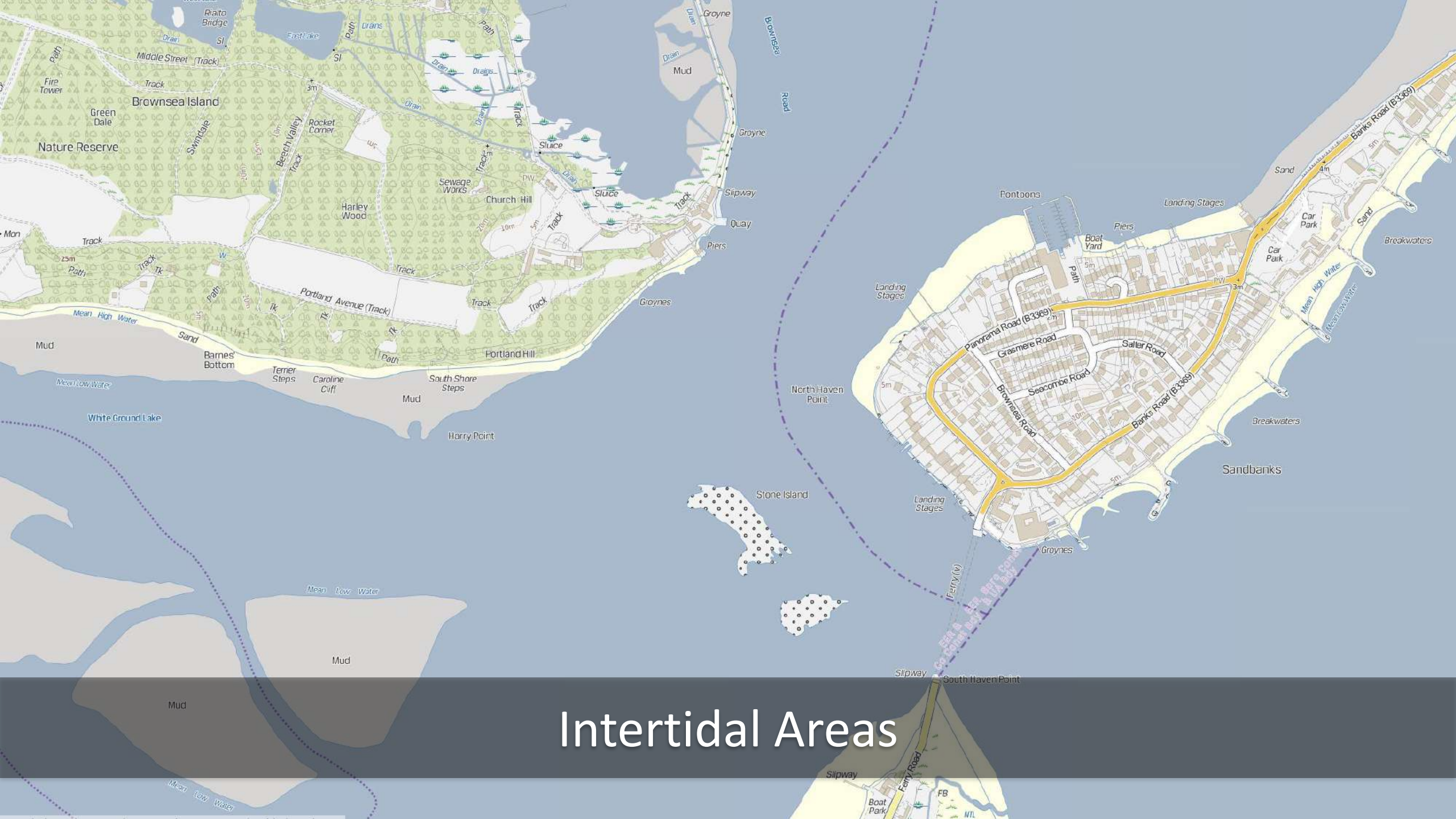
☐ Subsea Cabling

☐ Surface Waste Water





Intertidal Areas

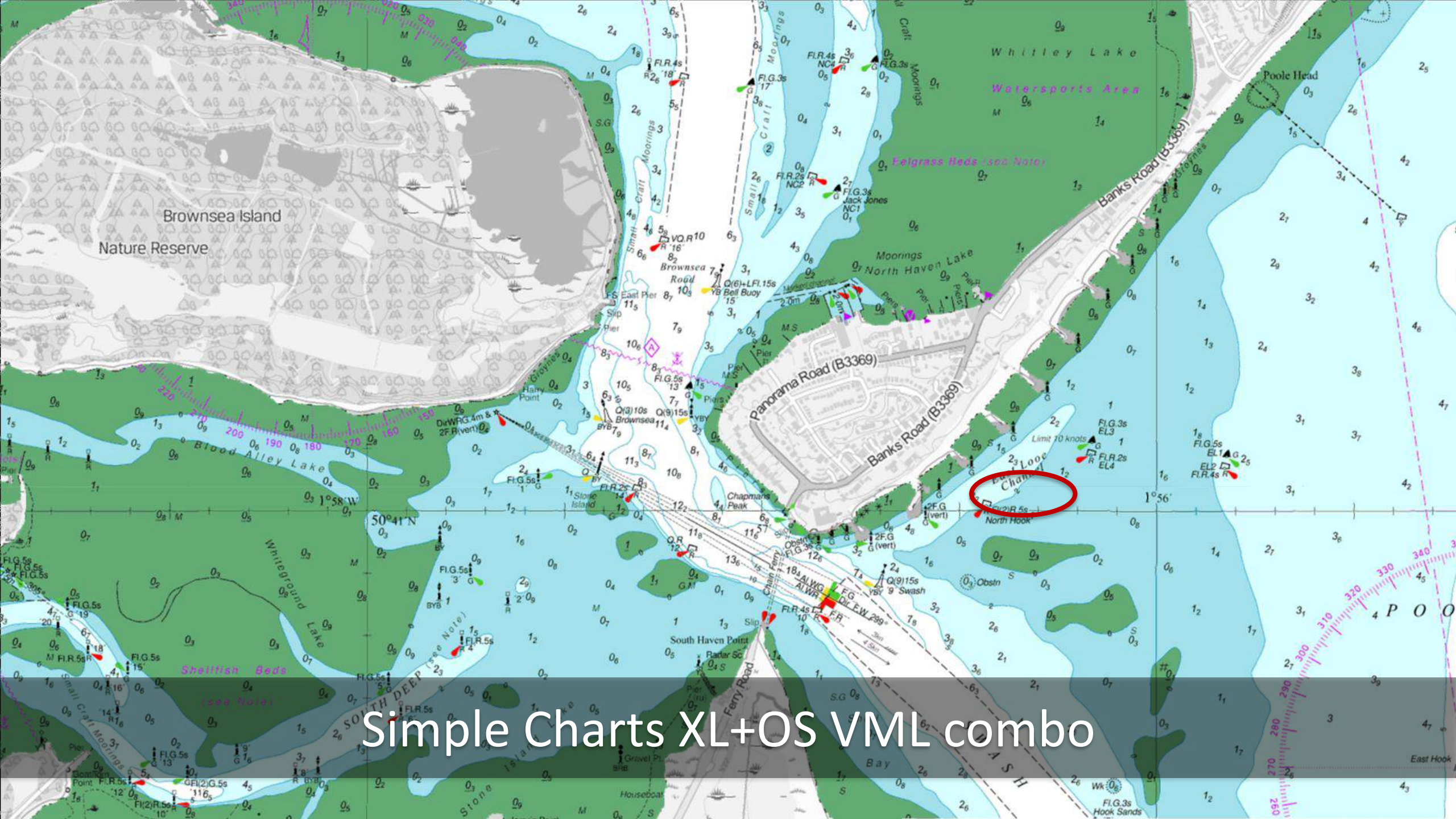


Intertidal Areas

Raster vs. Vector

- Styled by cartographers at OS / UKHO
- Compliant with cartographic standards
- Familiarity (loyalty?) for paper product users
- Ready-to-use in GIS software
- No / limited spatial analysis
- Option for land-less with Raster Charts XL

- Styled by you (or adopt a pre-made stylesheet)
- Option to compromise on cartographic standards
- Potential loss of familiarity
- Increased effort required in GIS software
- Spatial analysis possible
- **Greater flexibility for blending and conflating land/marine map data sources**



Simple Charts XL+OS VML combo



Vector Tiles



ADMIRALTY

Symbols and Abbreviations used on ADMIRALTY Paper Charts


United Kingdom
Hydrographic Office

NPS011
7th Edition
2018






ADMIRALTY

Symbols and Abbreviations used on ADMIRALTY Paper Charts

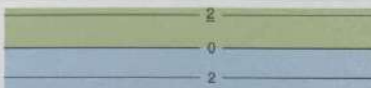
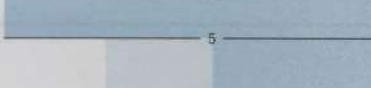
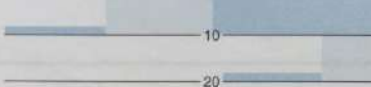
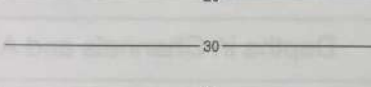
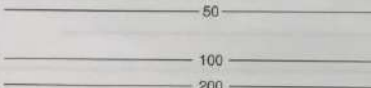
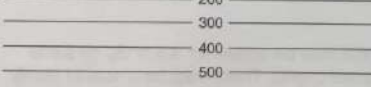
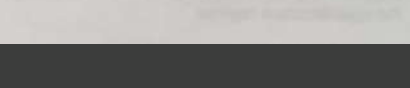



 United Kingdom
Hydrographic Office

NPS011
7th Edition
2018

		Diatoms	†	Di
W		Radiolaria	†	Rd rad
X		Pteropods	†	Pt
Y		Polyzoa	†	Po pol

Intertidal Areas	
20	
21	
22	

Qualifying Terms	
30	f
31	m
32	c

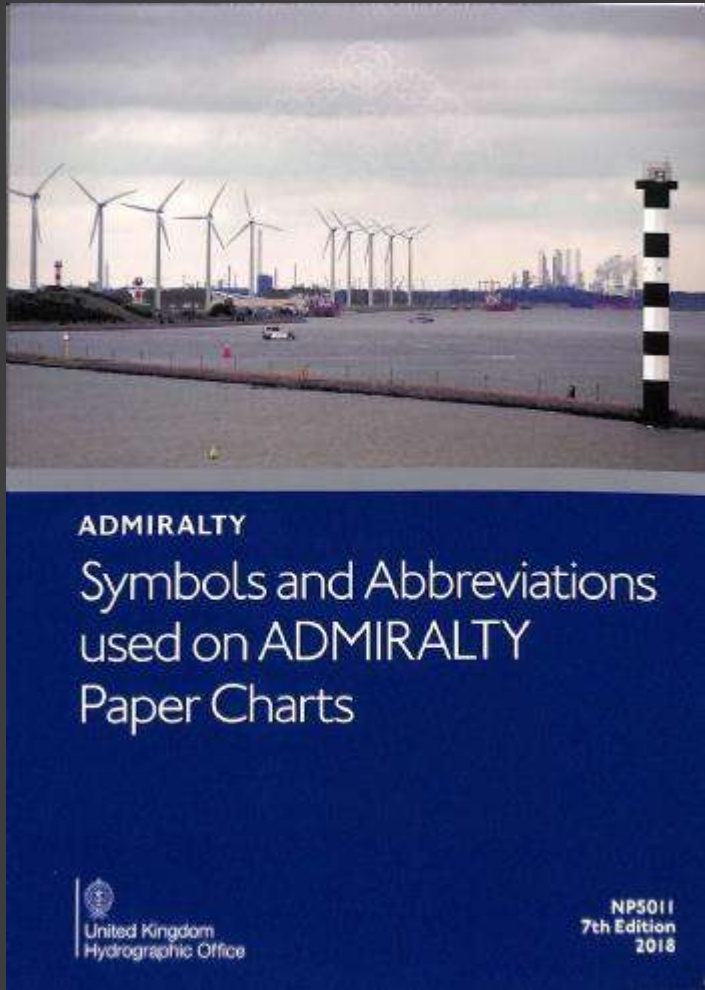
Depth Contours	
30	
	
	
	
	
	
	
	
	
	

Dries 2m contour
Low Water (LW) Line, Chart Datum (CD)

Blue tint, in one or more shades, and tint ribbons, are shown to different limits according to the scale and purpose of the chart and the nature of the bathymetry.

On some charts, the standard set of contours is augmented by additional contours in order to delimit particular bathymetric features or for the benefit of particular categories of shipping. However, in some instances where the provision of additional contours would be helpful, the survey data available does not permit it.

On charts which are metric conversions of fathoms charts there will be a non-standard series of contours.



<£20

But perhaps don't buy it on Amazon...

amazon.co.uk prime

Deliver to Warren Cobham KT11 3EP

Shop by Department

Buy Again Warren's Amazon Christmas Shop Cyber Monday Sale Gift Cards & Top Up Sell Help

Hello, Warren Your Account Your Prime Your Lists Basket

Amazon.co.uk Today's Deals Warehouse Deals Outlet Subscribe & Save Vouchers Amazon Family Amazon Prime Amazon Pantry Prime Video Prime Student Mobile Apps Amazon Pickup Locations Amazon Assistant

1-16 of 21 results for "admiralty symbols" Sort by Featured

Show results for:

Books

- Engineering & Technology
- Nautical Navigation
- Shipbuilding
- Reference
- Almanacs & Yearbooks
- See more
- See All 4 Departments

Refine by

Delivery Day

- Get It Today

Book Language

- English

Book Format

Paperback

Avg. Customer Review

- ★★★★★ & Up
- ★★★★☆ & Up
- ★★★☆☆ & Up
- ★★☆☆☆ & Up

5011 Symbols and Abbreviations Used on Admiralty Charts (Admiralty Reference Publications) 3 Mar 2016

by Great Britain (author)

Paperback

£41.86 (3 used & new offers)

★★★★★ 5

5011 Symbols and Abbreviations Used on Admiralty Charts 1 Dec 2004

Paperback

£244.67 (5 used & new offers)

Paperback

£5.75 (5 used & new offers)

★★★★★ 10

Symbols and Abbreviations Used on Admiralty Charts 1 Dec 1998

Paperback

£4.71 (3 used & new offers)

See newer version

★★★★★ 2

Symbols and Abbreviations Used on Admiralty Charts (Admiralty Reference Publications) 7 Apr 2011

Paperback

£129.81 (6 used & new offers)

See newer version

★★★★★ 6

The final book from

STEPHEN HAWKING

Goal

Develop a vector-based interleaved map, preserving as much cartographic convention as possible, and deployed as a service.



PHOTO CREDIT: Richard Crease, with the help of Bournemouth Helicopters

Thank you

Warren Vick
wwick@europa.uk.com



Marine Data Management and GIS Workshop

