

Installation of RSOBIA for ESRI ArcMap

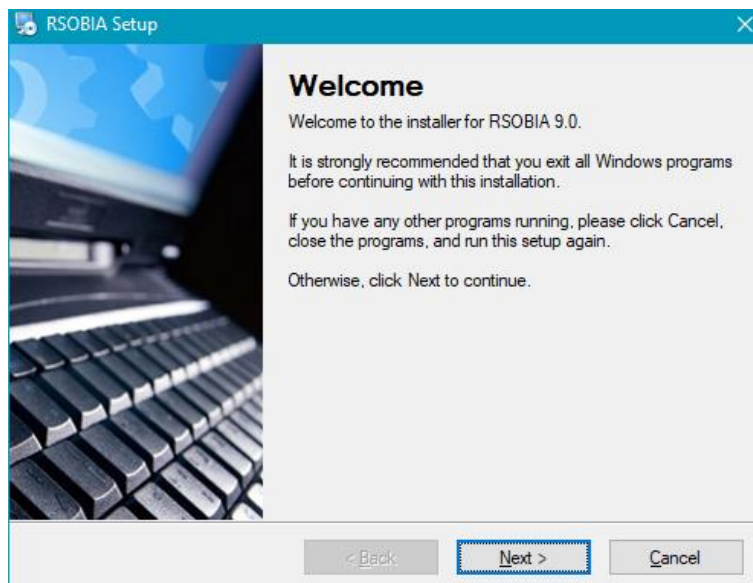
The version of ArcMap you are using needs to be set to 32bit geoprocessing. This version of RSOBIA works with ArcMap 10.1 to 10.6.

You will need Spatial Analyst extension to run most of the tools in RSOBIA.

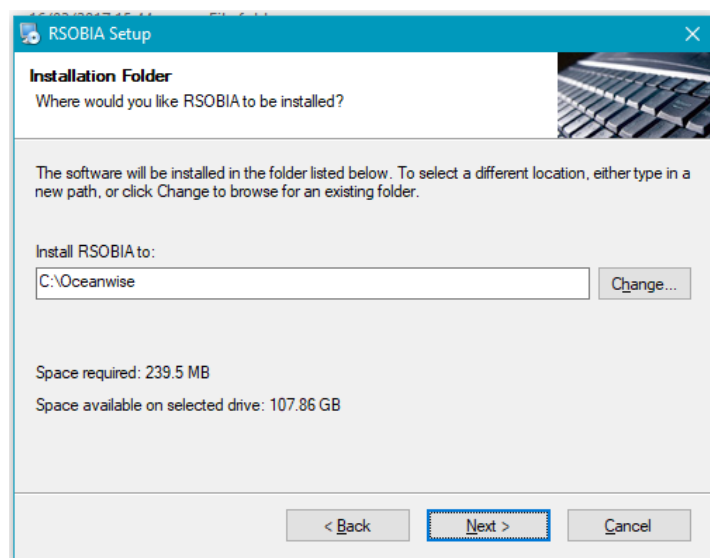
You will need administrator privilege

Installation is an easy one stage process:

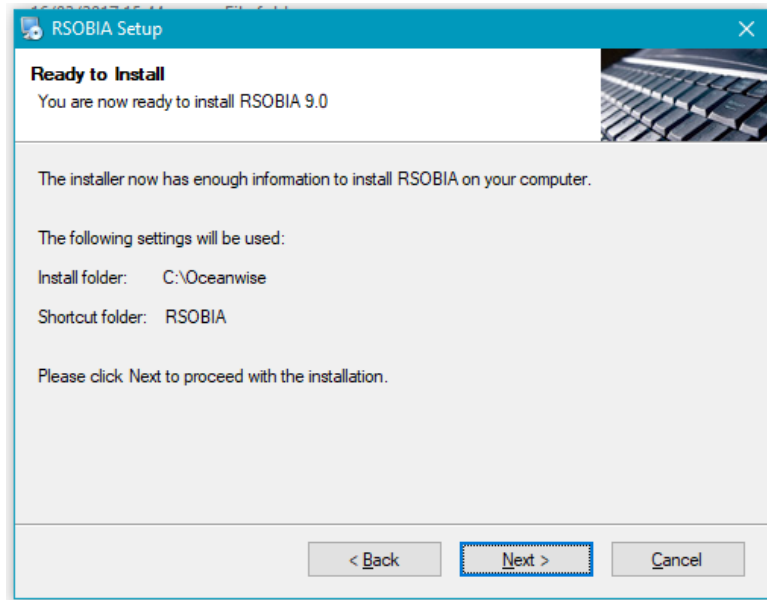
- Double click to run the RSOBIA_setup.exe Executable



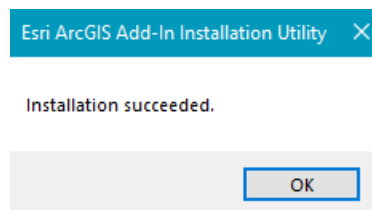
- Click next. You will then need to accept the license agreement and click next



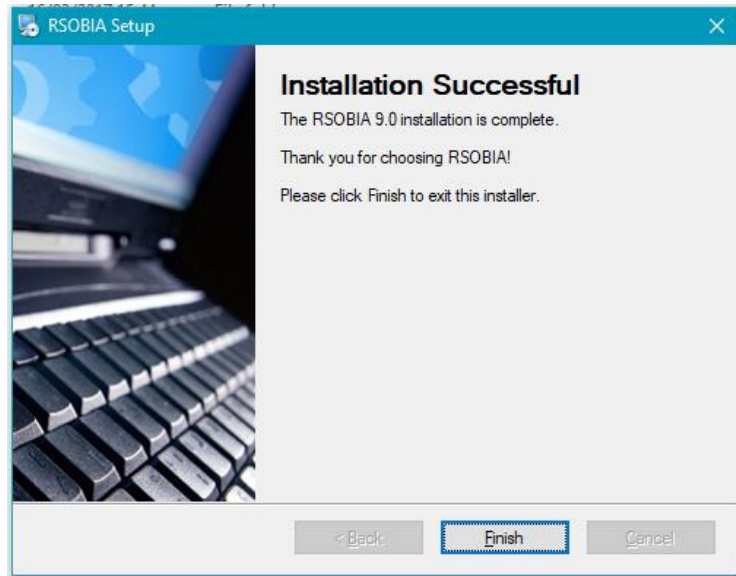
- Install the software in C:\Oceanwise or a useful directory - do NOT use spaces or forward slashes in the filename
- You may need about 70Mb of disk space
- A shortcut folder may be created on the Start Menu called RSOBIA



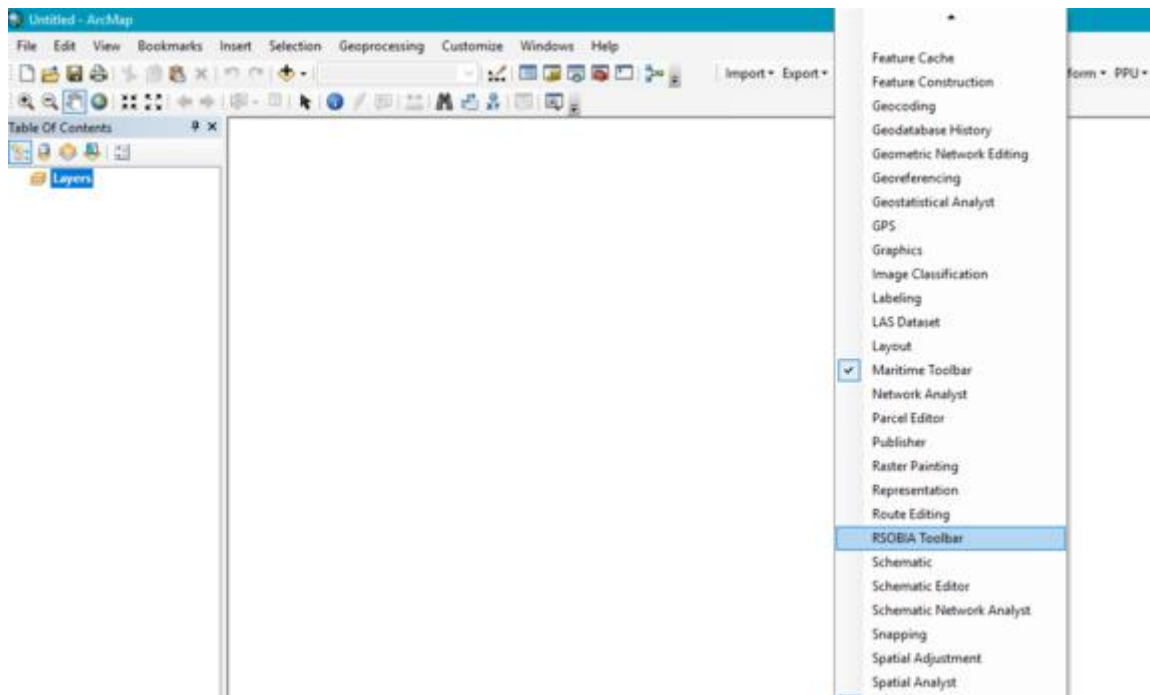
- Click on "next" to start the installation.
- During this process two environment variables are created:
 - PATH pointing to %RSOBIA%
 - RSOBIA pointing to C:\Oceanwise\RSOBIA\bin and C:\Oceanwise\RSOBIA\lib (or wherever it has been defined earlier)



- Click on Install Add-In
- Final window is



- Finally click on the Finish button.
- Now start ArcMap. If the RSOBIA toolbar does not automatically appear, right click in the menu bar grey area and then left click "RSOBIA Toolbar" on the pulldown menu.



- The starting of ArcMap copies the relevant toolbar files to C:\Users\\AppData\Local\ESRI\Desktop10.x\AssemblyCache (This is a hidden system file and only for your information)